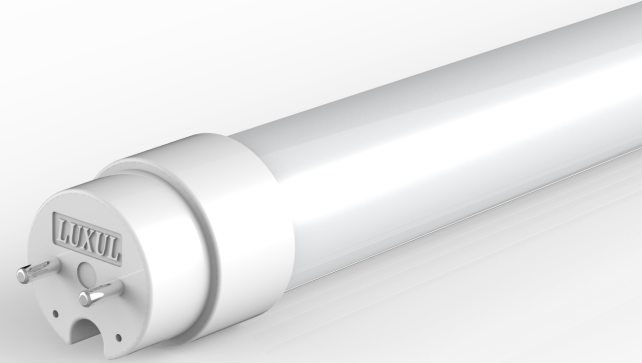


# E-Lux/T5

## 4FT/3000K-6500K

Luxul Technology's American-made LED T5-4ft Lamps create a dimmable\* solution for direct replacement of fluorescent lamps with existing ballasts.

\*Note : When interfaced with dimmable ballasts and switches

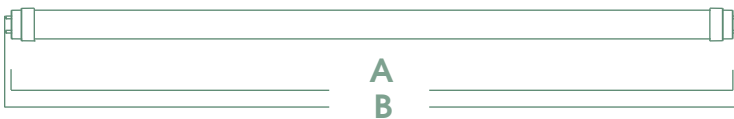


### ● Optical Parameters

Model No.	Order No.	Color Temperature	Luminance	Lm/W	CRI	Angles	LED Type	Power (0.992)
E-Lux/T5 /4FT/3000K	E5N4F30G	3000K	1800 Lm	110	≥ 80	300°	SMD	16
E-Lux/T5 /4FT/3500K	E5N4F35G	3500K	1800 Lm	110	≥ 80	300°	SMD	16
E-Lux/T5 /4FT/4000K	E5N4F40G	4000K	1800 Lm	110	≥ 80	300°	SMD	16
E-Lux/T5 /4FT/5000K	E5N4F50G	5000K	1800 Lm	110	≥ 80	300°	SMD	16
E-Lux/T5 /4FT/5700K	E5N4F57G	5700K	1800 Lm	110	≥ 80	300°	SMD	16
E-Lux/T5 /4FT/6500K	E5N4F65G	6500K	1800 Lm	110	≥ 80	300°	SMD	16

### ● Mechanical Parameters

A (mm)	B (mm)	Weight (g)
1149	1162	183 ± 10



### ● Installation

Step 1	Turn off power
Step 2	Remove fluorescent tube
Step 3	Install Luxul LED tube into fixture
Step 4	Turn on power

### ● Features, Benefits, and Performance

- 50% reduction in energy consumption over traditional fluorescent tubes.
- 5-Year warranty.
- 50,000 hour lifespan.
- Dimmable to 5% (when interfaced with dimmable ballasts and switches).
- Vibration and impact resistant.
- Plastic, shatterproof construction.
- Instant illumination.
- No scalloping or flickering.
- Cool to the touch.
- No UV emission.
- Tight LED binning creates consistent color temperature.
- Capable of indoor usage in -5°F to 115°F temperature range.